



GIBBSTON

---

# Community Response Plan



# contents...

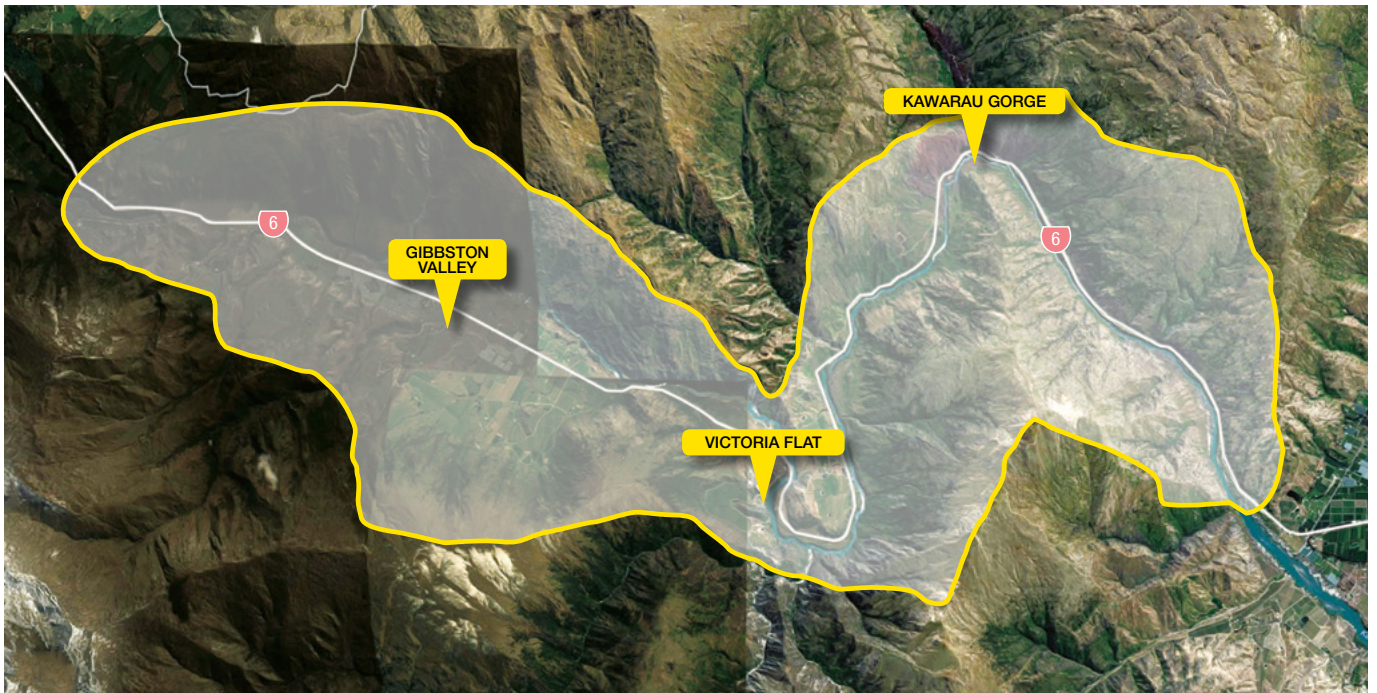
<b>Gibbston / Victoria Flat / Kawarau Gorge Area Map</b>	<b>3</b>	<b>Road Transport Crashes</b>	<b>20</b>
		Before, during and after	20
		Truck crash zones maps	21
<b>Key Hazards</b>	<b>4</b>	<b>Gibbston / Victoria Flat / Kawarau Gorge Evacuation Routes</b>	<b>22</b>
Earthquake	4		
Major Storms / Snowstorms	4		
Wildfire	4		
Landslide	5		
Accident	5		
<b>Household Emergency Plan</b>	<b>6</b>	<b>Plan Activation Process</b>	<b>23</b>
		Civil Defence Centres	23
		Roles and responsibilities	23
<b>Emergency Survival Kit</b>	<b>7</b>	<b>Gibbston Tactical Sites Map</b>	<b>24</b>
Getaway Kit	7		
Stay in touch	7	<b>Victoria Flat Tactical Sites Map</b>	<b>25</b>
<b>Earthquake</b>	<b>8</b>	<b>Kawarau Gorge Tactical Sites Map</b>	<b>26</b>
Before and during an earthquake	8		
After an earthquake	9	<b>Gibbston / Victoria Flat / Kawarau Gorge Civil Defence Centres Map</b>	<b>27</b>
Post disaster building management	9		
Fault Lines Map	10	<b>Visitor, Tourist and Foreign National Welfare</b>	<b>28</b>
<b>Major Storms / Snowstorms</b>	<b>11</b>		
Before and when a warning is issued	11	<b>Emergency Contacts</b>	<b>29</b>
After a storm, snowstorms	12		
<b>Wildfires</b>	<b>13</b>	<b>Notes</b>	<b>30</b>
Before and during	13		
After a fire	14	<b>For further information</b>	<b>32</b>
Fire seasons	14		
<b>Landslide</b>	<b>15</b>		
Before and during	15		
After a landslide	16		
Danger signs	16		
Gibbston Landslide Zones Map	17		
Kawarau Gorge Landslide Zones Map	18		
Kawarau Gorge Debris Flow (Mudslide) Zones Map	19		

# get ready...



GIBBSTON / VICTORIA FLAT / KAWARAU GORGE

## Area Map



# get ready...



## THE KEY HAZARDS IN GIBBSTON

Earthquake // Major Storms // Snowstorms  
Wildfire // Landslide // Accident



## Earthquake

New Zealand lies on the boundary of the Pacific and Australian tectonic plates. Most earthquakes occur at faults, which are breaks extending deep within the earth, caused by movements of these plates.

There are thousands of earthquakes in New Zealand every year, but most of them are not felt because they are either small, or very deep within the earth. Each year there are about 150 – 200 quakes that are big enough to be felt. A large, damaging earthquake could occur at any time, and can be followed by aftershocks that continue for days, weeks or months. [www.geonet.org.nz](http://www.geonet.org.nz)



## Major storms / Snowstorms

Major storms affect wide areas and can be accompanied by strong winds, heavy rain, thunder, lightning, tornadoes and snow. They can cause damage to property, infrastructure, affect crops and livestock and disrupt essential services.

Severe weather warnings are issued by the MetService and available through the broadcast media, by email alerts, and online at [www.metservice.com](http://www.metservice.com)



# get ready...



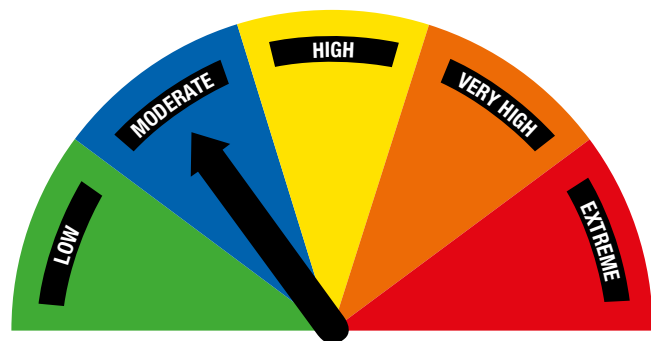
## Wildfire

Although there are many benefits to living in the country, rural property owners face a higher risk of fire than city dwellers.

If a fire starts it may not be detected as quickly and emergency services take longer to respond because of greater travel distances.

For information on fire danger, fire season status and requirements for fire permits visit [www.fireandemergency.nz](http://www.fireandemergency.nz)

## FIRE DANGER TODAY



## Landslide

Landslides are vertical and horizontal land movement down a slope and most are triggered by heavy rain, snowmelt, earthquake shaking, volcanic eruptions and gravity.

[www.geonet.org.nz](http://www.geonet.org.nz)  
[www.eqc.govt.nz](http://www.eqc.govt.nz)



## Road Transport Crashes

Queenstown Lakes' topography is varied, ranging from rolling flats to mountain passes, with many winding roads. Add in ice and snow, visitors unfamiliar with our conditions, and congested roads, managing transport in this area

is challenging. The New Zealand Transport Agency operates the state highways and Queenstown Lakes District council manages the local roads.  
[www.nzta.govt.nz](http://www.nzta.govt.nz) and [www.qldc.govt.nz](http://www.qldc.govt.nz)

# get ready...



## CREATE AND PRACTISE

# Household Emergency Plan

**YOUR HOUSEHOLD** Address

Name <input type="text"/>	Phone numbers <input type="text"/>
Name <input type="text"/>	Phone numbers <input type="text"/>
Name <input type="text"/>	Phone numbers <input type="text"/>
Name <input type="text"/>	Phone numbers <input type="text"/>
Name <input type="text"/>	Phone numbers <input type="text"/>

**1.** If we can't get home or contact each other we will meet or leave a message at:

Name

Contact details

Name (back-up)

Contact details

Name (out of town)

Contact details

**2.** The person responsible for collecting the children from school is:

Name

Contact details

**3.** Emergency Survival Items and Getaway Kit

Person responsible for checking water and food

Items will be checked and replenished on:

(check and replenish at least once a year)

The Getaway Kits are stored in the

**4.** The radio station (inc AM/FM frequency) we will tune in to for local civil defence information during an emergency

**5.** Friends/neighbours who may need our help or who can help us

Name

Address

Phone

Name

Address

Phone

**6.** On a separate sheet of paper draw a plan of the house showing places to shelter in an earthquake or storm, exits and safe assembly areas and where to turn off water, electricity and gas.

**IMPORTANT PHONE NUMBERS FOR POLICE, FIRE OR AMBULANCE CALL 111**

Local Police station <input type="text"/>	Water Supplier <input type="text"/>
Medical Centre <input type="text"/>	Gas Supplier <input type="text"/>
Insurance Company <input type="text"/>	Electrician <input type="text"/>
Vet/Kennel/Cattery <input type="text"/>	Plumber <input type="text"/>
Electricity Supplier <input type="text"/>	Builder <input type="text"/>
Council Emergency Helpline <input type="text"/>	

# get ready...



## CREATE

# Emergency Survival Kit

In most emergencies you should be able to stay in your home. Plan to be able to look after yourself and your household for at least three days or more.

Assemble and maintain your emergency survival items for your home as well as a portable getaway kit in case you have to leave in a hurry. You should also have essential emergency items in your workplace and in your car.



## GETAWAY KIT

**Everyone should have a packed getaway kit in an easily accessible place at home and at work which includes:**

- Torch and radio with spare batteries
- Any special needs such as hearing aids and spare batteries, glasses or mobility aids
- Emergency water and easy-to-carry food rations such as energy bars and dried foods.
- First aid kit and essential medicines
- Essential items for infants or young children such as formula and food, nappies and a favourite toy
- Change of clothes (wind/waterproof clothing and strong outdoor shoes)
- Toiletries – towel, soap, toothbrush, sanitary items, toilet paper
- Blankets or sleeping bags
- Face and dust masks
- Pet supplies.

## HOW TO

# Stay in touch

**In a power outage**, only analogue phones on a copper wire network will continue to operate (fibre optic networks will fail).

Cell phone communications can become easily overloaded in a crisis. **Texting** is a better way to communicate with friends and family.

**Use your car** radio to listen to instructions and information if you don't have a battery operated radio.

**Use your car** for charging your cell phone/computer. A 12v charger is required for this. Make it part of your kit or keep in the car.

## LOCAL RADIO STATIONS

**Radio NZ // 101.6FM**

**The Hits // 99.9FM**

**More FM // 92.8FM**

## WEBSITES

Log on to one of the following websites for more information.

[www.otagocdem.govt.nz](http://www.otagocdem.govt.nz)

[www.qldc.govt.nz](http://www.qldc.govt.nz)

[www.facebook.com/QLDCinfo](https://www.facebook.com/QLDCinfo)

[www.facebook.com/otagocdem](https://www.facebook.com/otagocdem)

## TELEPHONE TREE

A phone tree is a network of people organized in such a way that they can quickly and easily spread information amongst each other.



## EARTHQUAKE

### Before an earthquake

- Getting ready before an earthquake strikes will help reduce damage to your home and business and help you survive.
- Develop a Household Emergency Plan. Assemble and maintain your Emergency Survival Items for your home and workplace, as well as a portable getaway kit.
- Practice Drop, Cover and Hold.
- Identify safe places within your home, school or workplace.
- Check your household insurance policy for cover and amount.
- Seek qualified advice to make sure your house is secured to its foundations and ensure any renovations comply with the New Zealand Building Code.



- Secure heavy items of furniture to the floor or wall.
- Visit [www.eqc.govt.nz](http://www.eqc.govt.nz) to find out how to quake-safe your home.

### During an earthquake



**IF YOU ARE INSIDE A BUILDING**, move no more than a few steps, drop, cover and hold. Stay indoors till the shaking stops and you are sure it is safe to exit. In most buildings in New Zealand you are safer if you stay where you are until the shaking stops.



**IF YOU ARE IN AN ELEVATOR**, drop, cover and hold. When the shaking stops, try and get out at the nearest floor if you can safely do so.



**IF YOU ARE OUTDOORS** when the shaking starts, move no more than a few steps away from buildings, trees, streetlights, and power lines, then Drop, Cover and Hold.



**IF YOU ARE DRIVING**, pull over to a clear location, stop and stay there with your seatbelt fastened until the shaking stops. Once the shaking stops, proceed with caution and avoid bridges or ramps that might have been damaged.



**IF YOU ARE IN A MOUNTAINOUS AREA** or near unstable slopes or cliffs, be alert for falling debris or landslides.



**IF YOU ARE NEAR A LAKE, BAY OR RIVER MOUTH** consider evacuating to higher ground immediately as a seiche (inland tsunami) may be generated with the potential to rapidly flood or inundate low lying areas to a depth of 5 metres or greater.





## After an earthquake

- Monitor social media and listen to your local radio stations as emergency management officials will be broadcasting the most appropriate advice for your community and situation.
- Expect to feel aftershocks.
- Check yourself for injuries and get first aid if necessary. Help others if you can.
- Be aware that electricity supply could be cut, and fire alarms and sprinkler systems can go off in buildings during an earthquake even if there is no fire. Check for, and extinguish, small fires.
- If you are in a damaged building, try to get outside and find a safe, open place. Use the stairs, not the elevators.
- Watch out for fallen power lines or broken gas lines, and stay out of damaged areas.
- Only use the phone for short essential calls to keep the lines clear for emergency calls.
- If you smell gas or hear a blowing or hissing noise, open a window, get everyone out quickly and turn off the gas if you can. If you see sparks, broken wires or evidence of electrical system damage, turn off the electricity at the main fuse box if it is safe to do so.
- Keep your animals under your direct control as they can become disorientated. Take measures to protect your animals from hazards, and to protect other people from your animals.
- If your property is damaged, take notes and photographs for insurance purposes. If you rent your property, contact your landlord and your contents insurance company as soon as possible.

## POST DISASTER

# Building management

Following the 2011 Canterbury earthquake, changes were made to how rapid building safety evaluations are carried out after earthquakes or floods. The Ministry of Building, Innovation & Employment (MBIE) has developed a number of documents to reflect these changes.

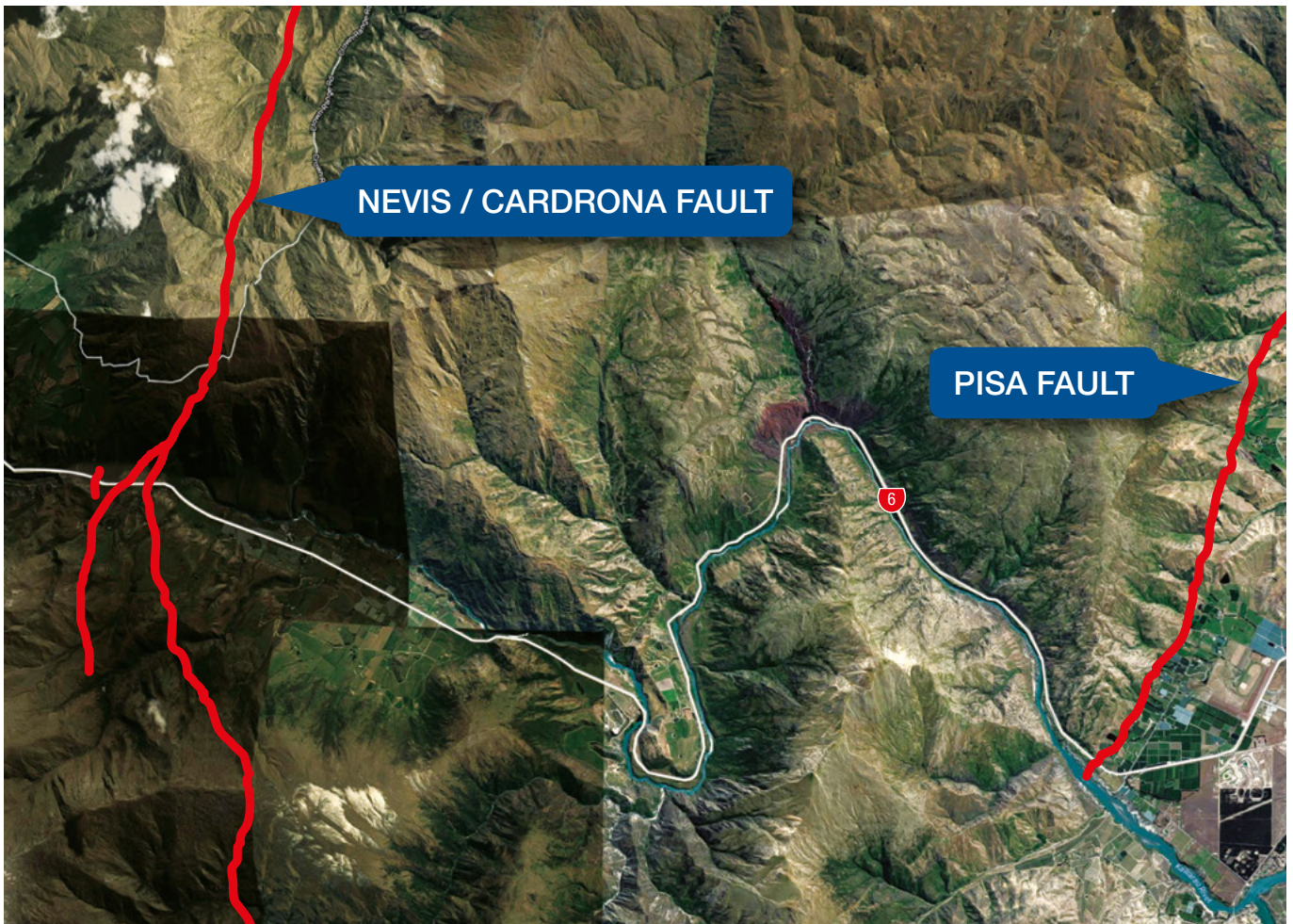
These documents are available on [www.building.govt.nz/post-disaster-building-management](http://www.building.govt.nz/post-disaster-building-management) for your information and are designed to be used by trained professionals during a State of Emergency.





GIBBSTON

## Local Seismic Fault Lines



*This work includes LINZ's data which is licensed by Land Information New Zealand (LINZ) for re-use under the Creative Commons Attribution 4.0 International licence.*



## SNOWSTORMS / MAJOR STORMS

### Before a storm

- Develop a Household Emergency Plan. Assemble and maintain your Emergency Survival Items for your home as well as a portable getaway kit.
- Prepare your property for high winds. Secure large heavy objects or remove any item which can become a deadly or damaging missile. Get your roof checked regularly to make sure it is secure. List items that may need to be secured or moved indoors when strong winds are forecast.
- Keep materials at hand for repairing windows, such as tarpaulins, boards and duct tape.
- If you are renovating or building, make sure all work complies with the New Zealand Building Code which has specific standards to minimise storm damage.
- If farming, know which paddocks are safe to move livestock away from floodwaters, landslides and power lines.

### WHEN A WARNING IS ISSUED AND During a storm

- Stay informed on weather updates. Monitor social media and listen to your local radio stations as civil defence authorities will be broadcasting the most appropriate advice for your community and situation.  
[www.metservice.com](http://www.metservice.com)
- Put your household emergency plan into action and check your getaway kit in case you have to leave in a hurry.
- Secure, or move indoors, all items that could get blown about and cause harm in strong winds.
- Close windows, external and internal doors. Pull curtains and drapes over unprotected glass areas to prevent injury from shattered or flying glass.
- If the wind becomes destructive, stay away from doors and windows and shelter further inside the house.
- Water supplies can be affected so it is a good idea to store drinking water in containers and fill bathtubs and sinks with water.
- Don't walk around outside and avoid driving unless absolutely necessary.
- Power cuts are possible in severe weather. Unplug small appliances which may be affected by electrical power surges. If power is lost unplug major appliances to reduce the power surge and possible damage when power is restored.
- Bring pets inside. Move stock to shelter. If you have to evacuate, take your pets with you.





## After a storm

- Monitor social media and listen to your local radio stations as emergency management officials will be broadcasting the most appropriate advice for your community and situation.
- Check for injuries and help others if you can, especially people who require special assistance.
- Look for and report broken utility lines to appropriate authorities.
- Contact your local council if your house or building has been severely damaged.
- If your property or contents are damaged, take notes and photographs and contact your insurance company. Inform your landlord if there is damage to the rental property.
- Ask your council for advice on how to clean up debris safely.



## Snowstorms

In a snowstorm, the primary concerns are the potential loss of heat, power and telephone service, and a shortage of supplies if storm conditions continue for more than a day. It is important for people living in areas at risk from snowstorms to consider the need for alternative forms of heating and power generation.

- Avoid leaving home unless absolutely necessary when a snow warning is issued.
- If you have to travel make sure you are well prepared with snow chains, sleeping bags, warm clothing and essential emergency items.
- At home, check fuel supplies for woodburners, gas heaters, barbecues and generators.
- Bring pets inside. Move domestic animals and stock to shelter.
- If you are caught in your car or truck in a snowstorm, stay in your vehicle. Run the engine every ten minutes to keep warm. Drink fluids to avoid dehydration. Open the window a little to avoid carbon monoxide poisoning. Make yourself visible to rescuers by tying a brightcoloured cloth to your radio aerial or door and keeping the inside light on.





## WILDFIRE

### Before a fire

**To protect your rural property from fire, we recommend:**

- Installing smoke alarms and testing them regularly.
- Designing an escape plan and practicing it.
- Keeping the grass green and mown or grazed around your home.
- Creating a safety zone around your home of at least 10m by clearing any dead or dry material and replacing flammable plants and trees with low flammable species.
- Making sure your property is clearly signposted with your RAPID rural property identification number.
- Installing multipurpose dry powder extinguishers in your house and out buildings.
- Keeping a garden hose connected and make sure it is long enough to reach around the house.
- Ensuring your driveway has a minimum clearance of 4m wide and 4m high and adequate turning space for large vehicles.
- Easy access to water supplies and making sure they are signposted.
- Storing firewood and other flammable material away from your house.
- Safe handling and storage of gas or liquid fuels.
- Maintaining machinery and equipment in working order.
- Disposing of ash safely in a metal container and using approved incinerators.

### During a fire

- Crawl low and fast to escape smoke. **'Get Down, Get Low, Get Out.'**
- Shut doors behind you to slow the spread of fire.
- Meet at the planned meeting place.
- Once out, stay out - never go back inside.
- Phone 111 from a safe phone.

**TELL FIRE AND EMERGENCY NEW ZEALAND**

- House number
- Street
- Nearest intersection
- Suburb and City
- RAPID number if you have one





## After a fire

Nothing can really prepare you for the impact of a fire or other emergency on your family and property. Even a small fire or flood can make you feel helpless and unsure of what to do next. This is entirely understandable. Fire and Emergency New Zealand (FENZ) regularly sees home owners faced with the same distressing situation. Here's some guidance on the important things you need to do now that the unimaginable has happened.

Do not enter your damaged house unless you have to and have been advised it is safe to do so. Fire and Emergency NZ will check the water, electricity and gas supplies and either arrange to have them disconnected or advise you what action to take.

If you can't enter your home, you'll need to arrange accommodation. You may need to stay

with family, friends or in a motel for at least one night, and longer if the house has been seriously damaged.

### **When your house is safe and you are allowed back:**

- Try to find your identification, insurance information, medication information, eye glasses, hearing aid, wallet and valuables
- If the house is too badly damaged to live in, board up openings to discourage trespassers
- You may need to arrange security patrols to protect it from burglary
- Keep receipts for expenses resulting from the fire, such as accommodation or clothes
- Get supplies of medicine or eye glasses.

## Fire Seasons

There are three fire seasons you should be aware of:

### **OPEN FIRE SEASON**

A fire permit is not required to light a fire in the open air as long as certain conditions are met

### **RESTRICTED FIRE SEASON**

In this season a fire permit from Fire and Emergency NZ Authority is required before you can light a fire in the open air.

### **PROHIBITED FIRE SEASON**

Means a total fire ban is in place. Lighting fires in the open air is not permitted.

For the current fire season and to apply for fire permits contact Fire and Emergency NZ or visit [fireandemergency.nz](http://fireandemergency.nz)



**HAVE YOU CONSIDERED  
INSTALLING FIRE SPRINKLERS?**

Home sprinklers will protect your family, home and contents from the threat of fire - 24 hours a day.

Sprinkler technology has come a long way in a short space of time. The cost of including home sprinklers into a new house or adding them as part of major renovations is probably a lot cheaper than you think.

Home sprinklers use the same domestic plumbing as your kitchen taps and can be installed by a qualified plumber in less than two days.

More importantly though, sprinklers provide the fastest possible means of extinguishing fires in rural homes.

For more information visit [www.fireandemergency.nz](http://www.fireandemergency.nz)



## LANDSLIDE

### Before a landslide

- Develop an evacuation plan. Familiarise yourself with the land around you and regularly inspect your property watching for the patterns of storm water drainage on slopes near your home especially the places where runoff water converges. Watch the hillsides around your home for any signs of land movement, such as small landslides, debris flows or progressively tilting trees.
- Ensure livestock are in safe paddocks if there is heavy rain. Consider precautionary evacuation of livestock if you believe there is a risk of landslide. Bring your pets indoors and maintain direct control of them. Should you need to evacuate take your pets with you – if it is not safe for you, it is not safe for them.
- If you are near a stream or channel, be alert for any sudden increase or decrease in water flow and for a change from clear to muddy water. Such changes may indicate landslide activity upstream, so be prepared to move quickly. Act quickly. Save yourself, not your belongings.
- Listen for any unusual sounds that might indicate moving debris, such as trees cracking or boulders knocking together. A trickle of flowing or falling mud or debris may precede a large landslide. Moving debris can flow quickly and sometimes without warning.

### During a landslide

- If you learn or suspect that a landslide is occurring or is about to occur in your area evacuate immediately. Getting out of the path of a landslide or debris flow path is your best protection. Consider evacuating across slopes and not downhill below potential debris paths.
- Inform neighbours, they may not be aware of the potential hazard. Help neighbours who need assistance to evacuate. Check for injured and trapped persons and animals near the slide, without entering the slide area. Direct rescuers to their locations.
- Contact your local council or regional council. Local officials are the people best able to assess the potential danger.
- Help people who require special assistance – infants, elderly people, those without transportation, families who may need additional help, people with disabilities, visitors and tourists who don't know the area.



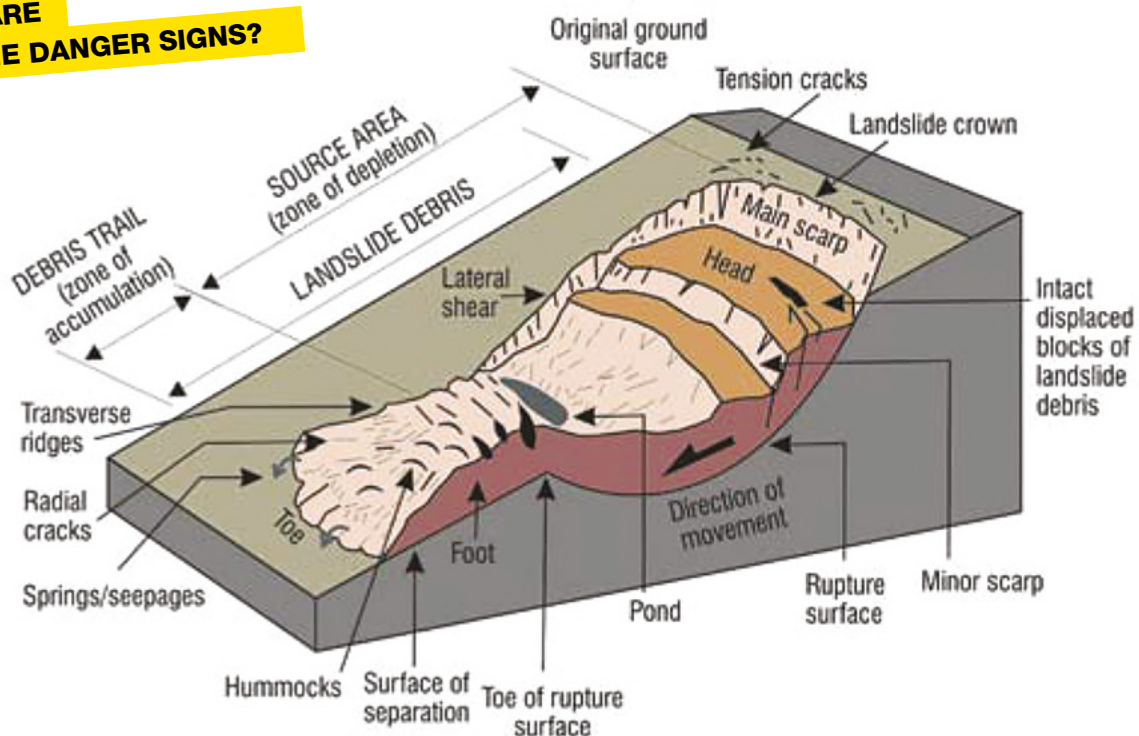


## After a landslide

- Stay away from the slide area. Further landslides may occur.
- Landslides can occur progressively, often hours or days after a triggering event e.g. rainstorm or earthquake. Be aware of any changes to your property following a landslide or major rainstorm or earthquake, noting any cracks or ground bulging.
- Watch for flooding which may occur after a landslide or debris flow.
- Look for and report broken utility lines to appropriate authorities. Reporting potential hazards will get the utilities turned off as quickly as possible, preventing further hazard and injury.
- Check your home's foundation, chimney, and surrounding land for damage.
- Re-plant damaged ground as soon as possible because erosion caused by the loss of ground cover can lead to flash flooding.
- If your property has been damaged contact EQC and your insurance company. Be aware that, in general, landslide insurance is not available. However, the Earthquake Commission may pay out on claims lodged by residential property owners for damage caused by landslides to residential properties and their contents, outbuildings, land within eight metres of buildings and outbuildings, access way land and a range of other structures and facilities.

[www.eqc.govt.nz](http://www.eqc.govt.nz)

### WHAT ARE THE DANGER SIGNS?



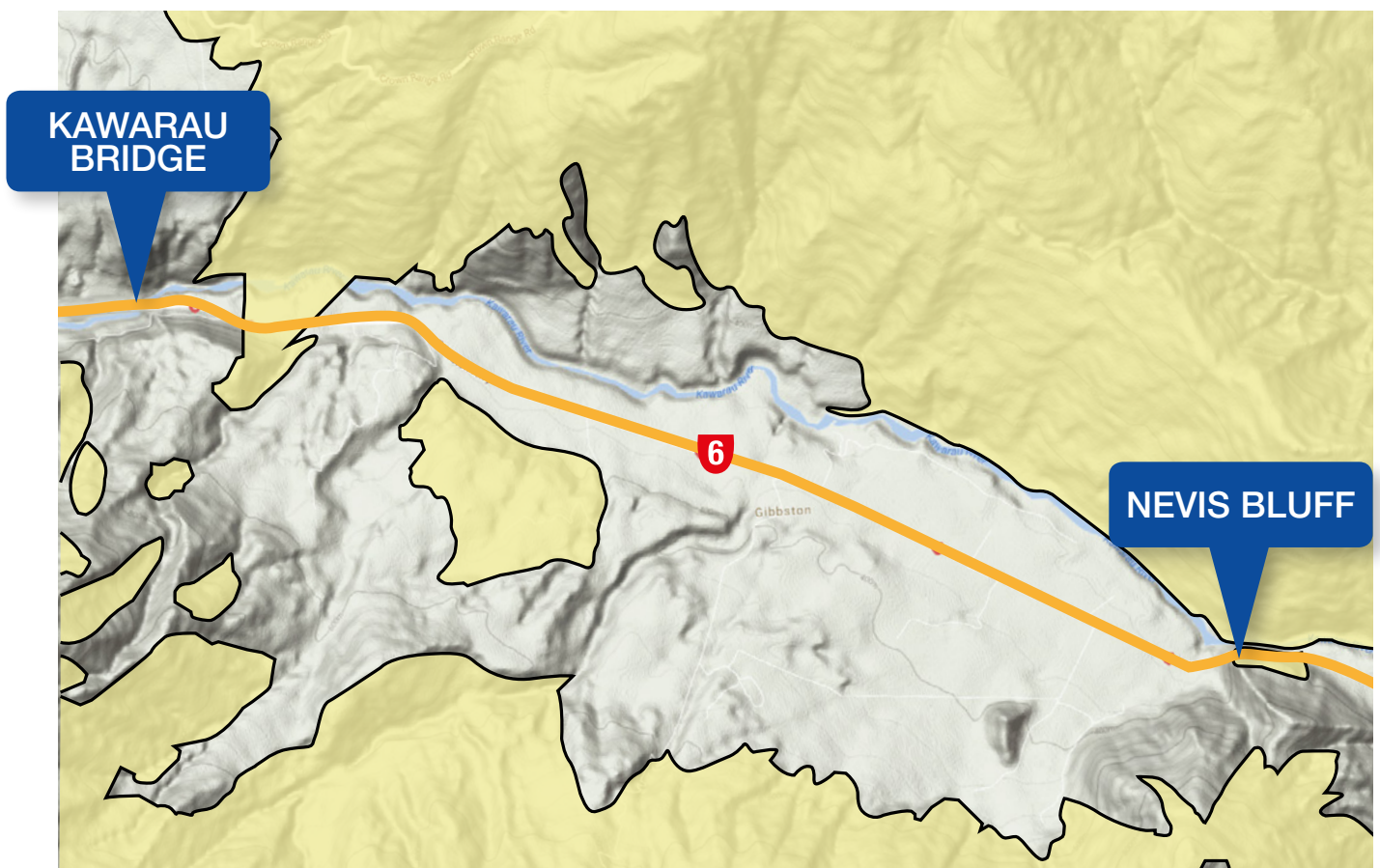




GIBBSTON

## Landslide Zones Map

(Indicative Only)



Landslide susceptible



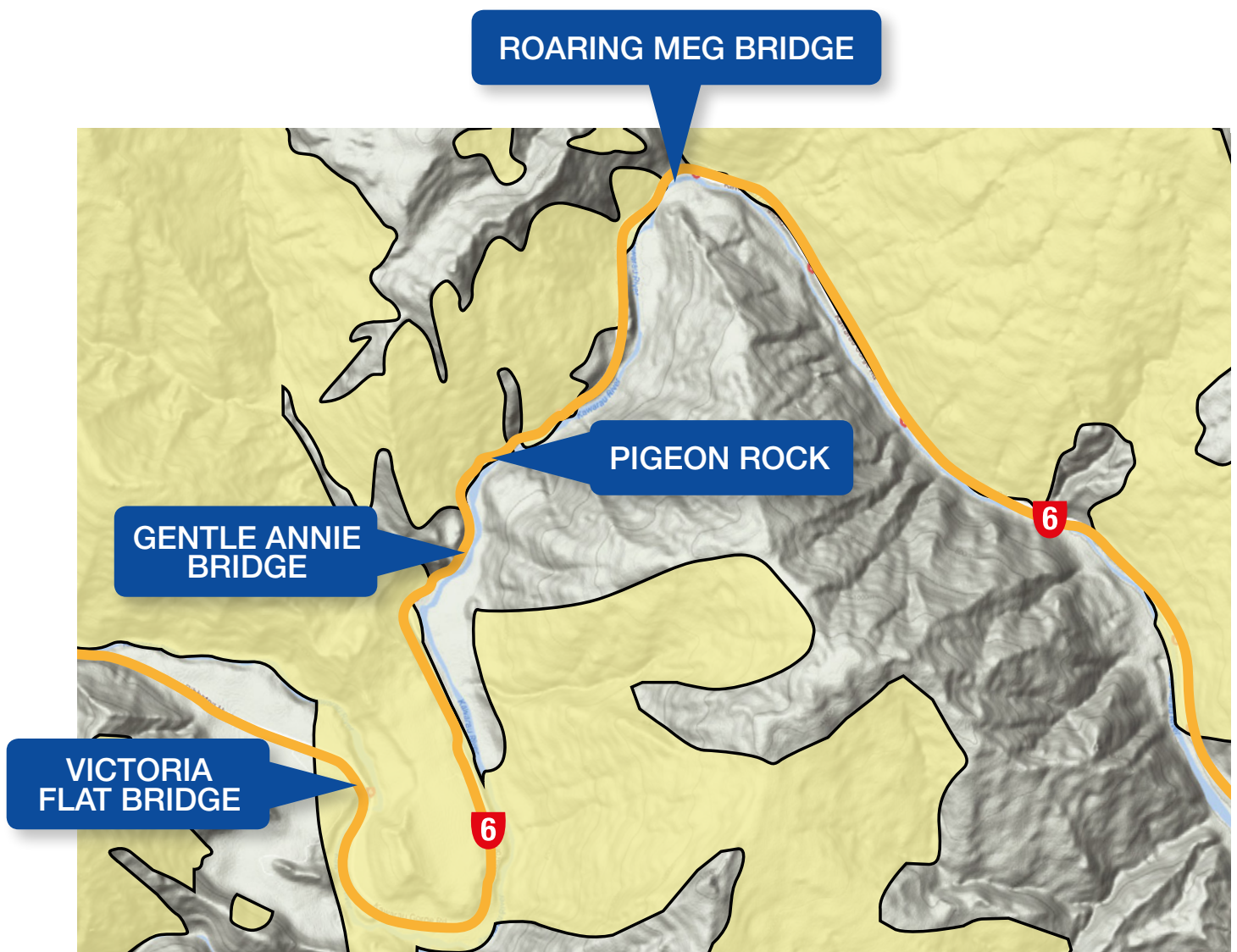
Risk of rock fall or  
bridge damage



KAWARAU GORGE

## Landslide Zones Map

(Indicative Only)



Landslide susceptible



Risk of rock fall or bridge damage



GIBBSTON

## Debris Flow (Mudslide) Zones

(Indicative Only)



Debris slide zones

## ROAD CRASHES INVOLVING HAZARDOUS SUBSTANCE

### Before a road transport crash

Heavy vehicles pose a particular challenge to road safety because the consequences of their crashes are more severe, particularly if they are transporting flammable or toxic substances. Toxic or industrial chemicals are widely used,

stored and transported for industrial use throughout the Otago area. These chemicals have the potential to cause mass casualties and would require large scale evacuation of buildings and residents.

### During a road transport crash

#### Definition of Evacuation Zones

#### HOT ZONE

This is the contaminated area where the initial release occurs or disperses to. It will be the area likely to pose an immediate threat to the health and safety of all those located within it and it is the area of greatest risk. The need to remove persons from this area is paramount. The Incident Commander will carry out a Dynamic Risk Assessment prior to anyone entering it and is an area that must be strictly controlled.

#### WARM ZONE

This is the area uncontaminated by the initial release of a substance, which becomes contaminated by the movement of people or vehicles. It is imperative that no victims leave this zone/cordon without appropriate decontamination.

#### COLD ZONE

This is the uncontaminated area where no exposure or risk is expected. Decontaminated persons will be taken to this area and given medical advice, medication and assessment by medical staff.

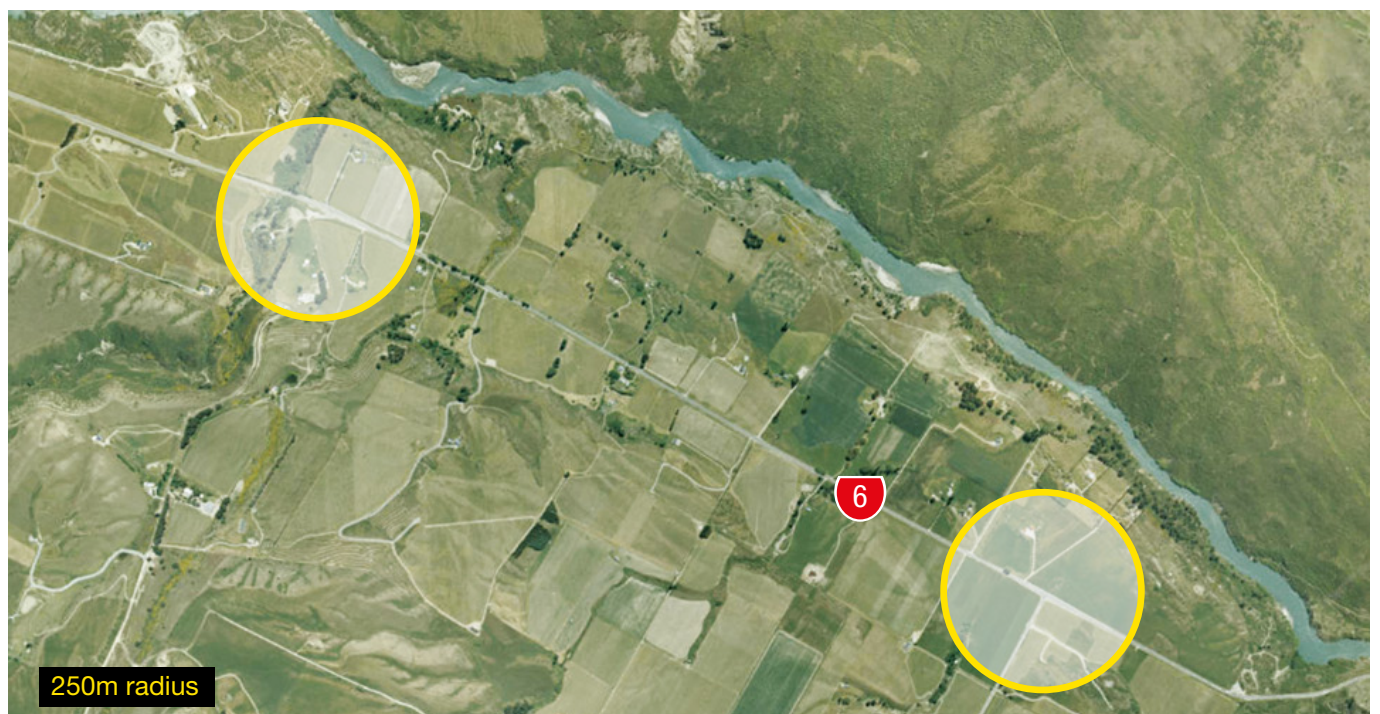
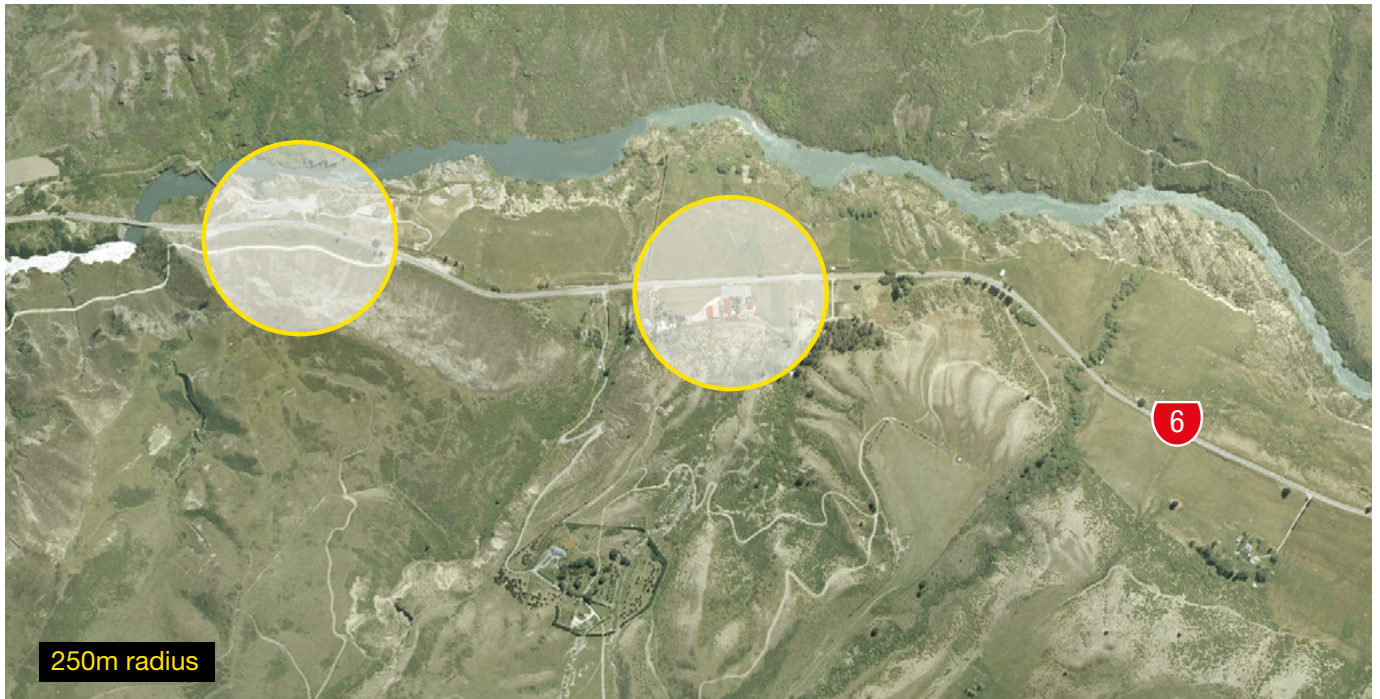
### After a road transport crash

Decontamination is the process of cleansing the human body to remove contamination by hazardous materials and infectious substances. People who have been contaminated are usually separated by gender and led into a decontamination tent where they privately shed their contaminated clothes and are then showered and issued clean clothing or plastic overalls. Fire and Emergency New Zealand, St John and Health personnel will then provide medical attention if required. Civil Defence, Red Cross, Salvation Army and Government support agency personnel will then provide temporary shelter, assistance and support at civil defence centres.



GIBBSTON

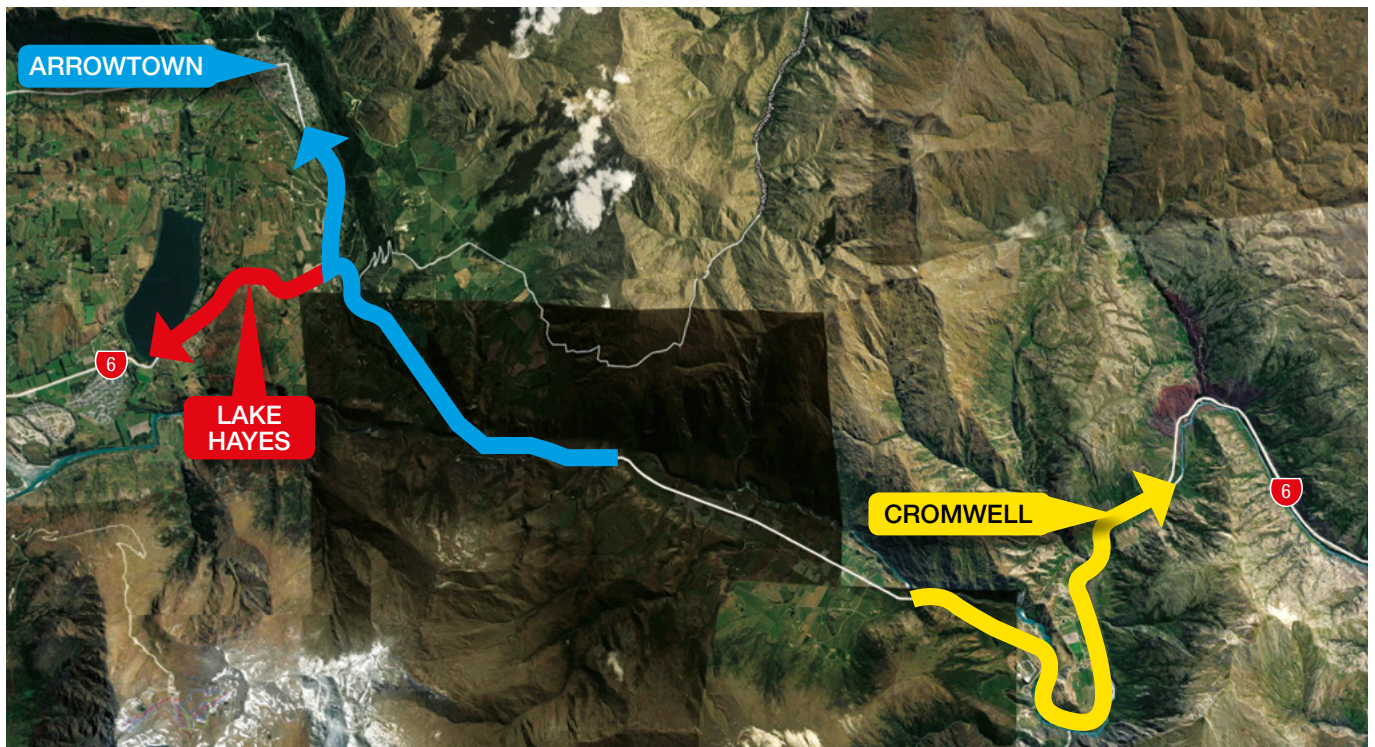
## Truck crash zones





GIBBSTON

## Evacuation routes





## Plan activation process

These instructions are for members of the Gibbston community response group and emergency services for initiating their pre-planned roles.

### DO THIS

- Arrange to meet at Kinross
- Liaise to determine what actions should be taken
- Consider who will be affected and where
- Assess vulnerable population site(s)
- Activate community warning systems i.e. door knocking, phone tree, emergency vehicle siren and PA's, texting, social media and local radio.
- Reassess the location of the Incident Control Point - ICP
- Consider the establishment of Civil Defence Centres. Geographically sectorise the area to aid damage assessment
- Notify the QLDC emergency operations centre (EOC) of what actions have been taken by phoning the Queenstown Lakes District Council on **03 441 0499** and emailing **eoc@qldc.govt.nz**. (Refer to the Communication Plan for satellite phone numbers or VHF channels)

## Civil Defence Centres

The opening of these centres will vary depending on the type of Civil Defence Emergency.

### AJ HACKETT - KAWARAU BUNGY CENTRE

Kawarau Bungy Centre  
South 45° 00' 33.4" / East 168° 54' 1.0"

### GIBBSTON VALLEY WINERY

1820 Gibbston Highway  
South 45° 00' 42.9" / East 168° 54" 55.7"

### KINROSS

2300 Gibbston Highway  
South 45° 01' 47.2" / East 168° 58' 24.5"

### AJ HACKETT - NEVIS BUNGY

Victoria Flat Road  
South 45° 03' 46.3" / East 169° 01' 44.0"

## Roles and responsibilities

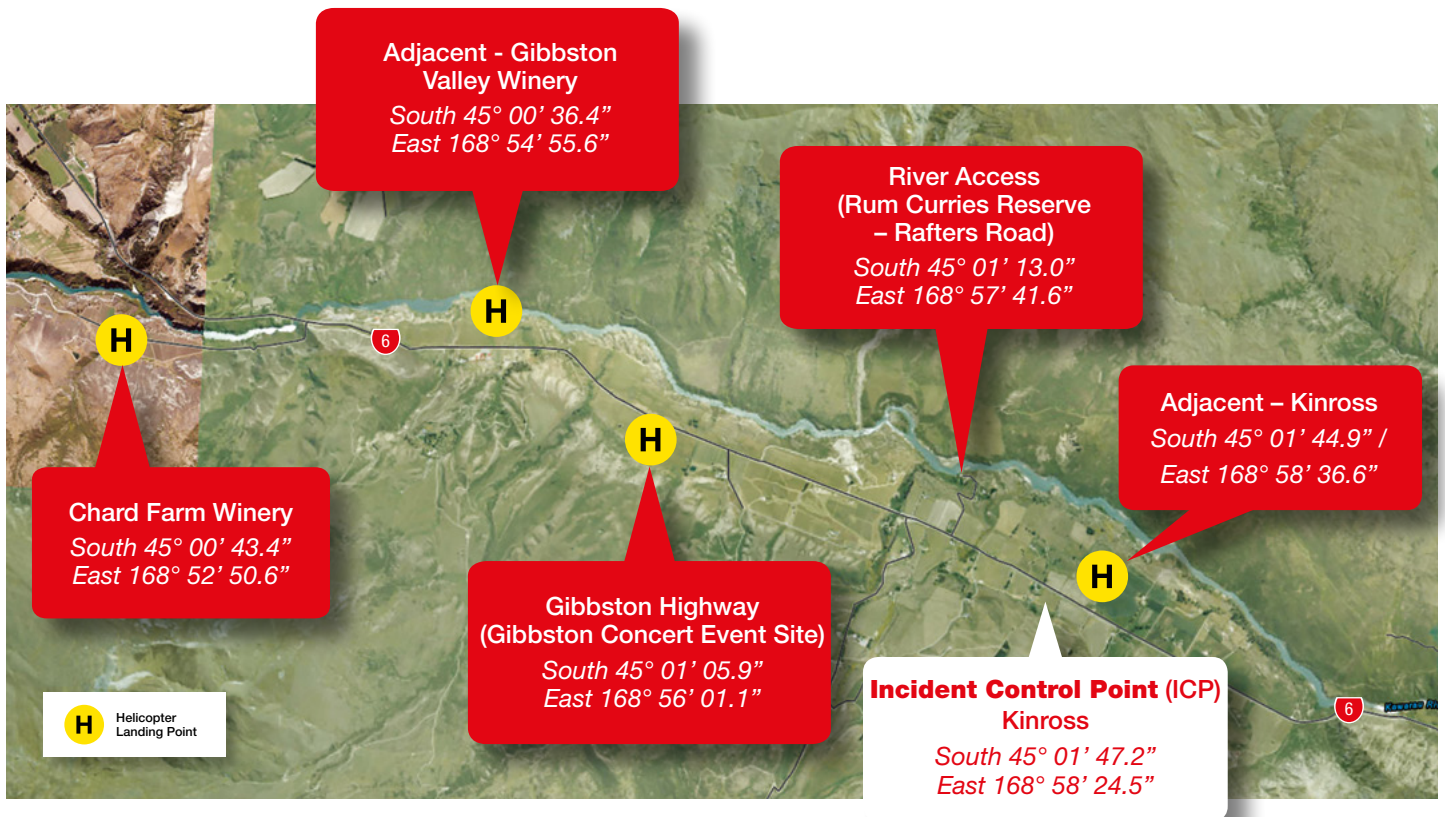
The roles and responsibilities of the emergency services and civil defence is defined by legislation. In the event of a "State of Emergency" being declared all activities are coordinated by civil defence.

	<p>Liaise with police and emergency services to initiate and assist in a response to a civil emergency, disseminate warnings and identify and make arrangements for civil defence centres if required.</p>		<p>Maintain law and order Protect life and property Assisting the coroner Search and rescue</p>
	<p>Rural and Urban firefighting Containment of releases and spillages of hazardous substances Urban search and rescue Redistribution of water for specific needs Reducing fire risk in rural areas</p>		<p>Visitor, tourist and foreign national registration and coordination Liaison with the QLDC emergency operations centre (EOC) on visitors, tourists and foreign national issues Providing logistical support</p>
			<p>Provision of emergency medical care</p>



## GIBBSTON

# Tactical Sites Map



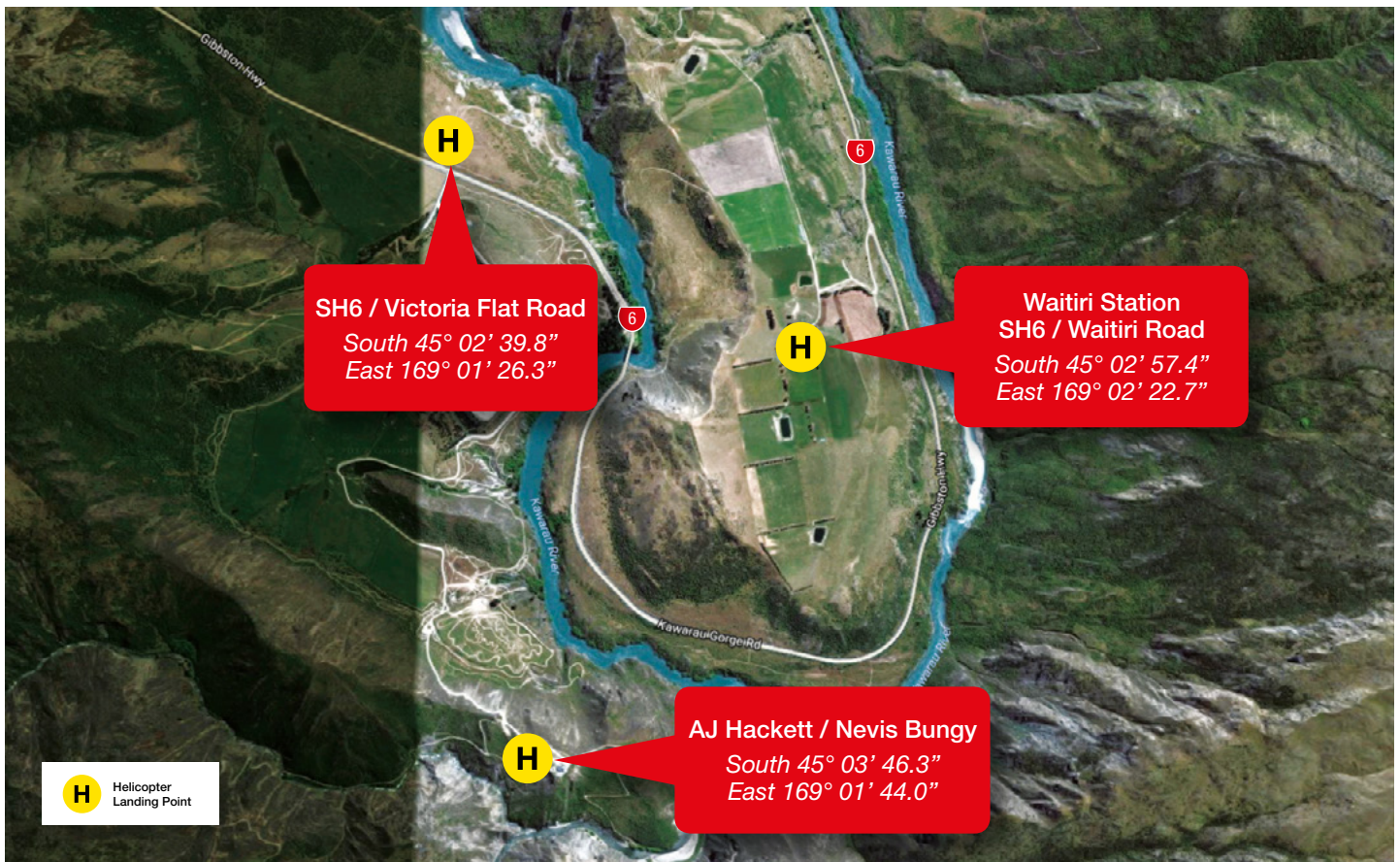
**EXTREME CAUTION for Helicopter Operations –  
High Voltage Transmission Towers run South East / North West in the Valley**





## VICTORIA FLAT

# Tactical Sites Map

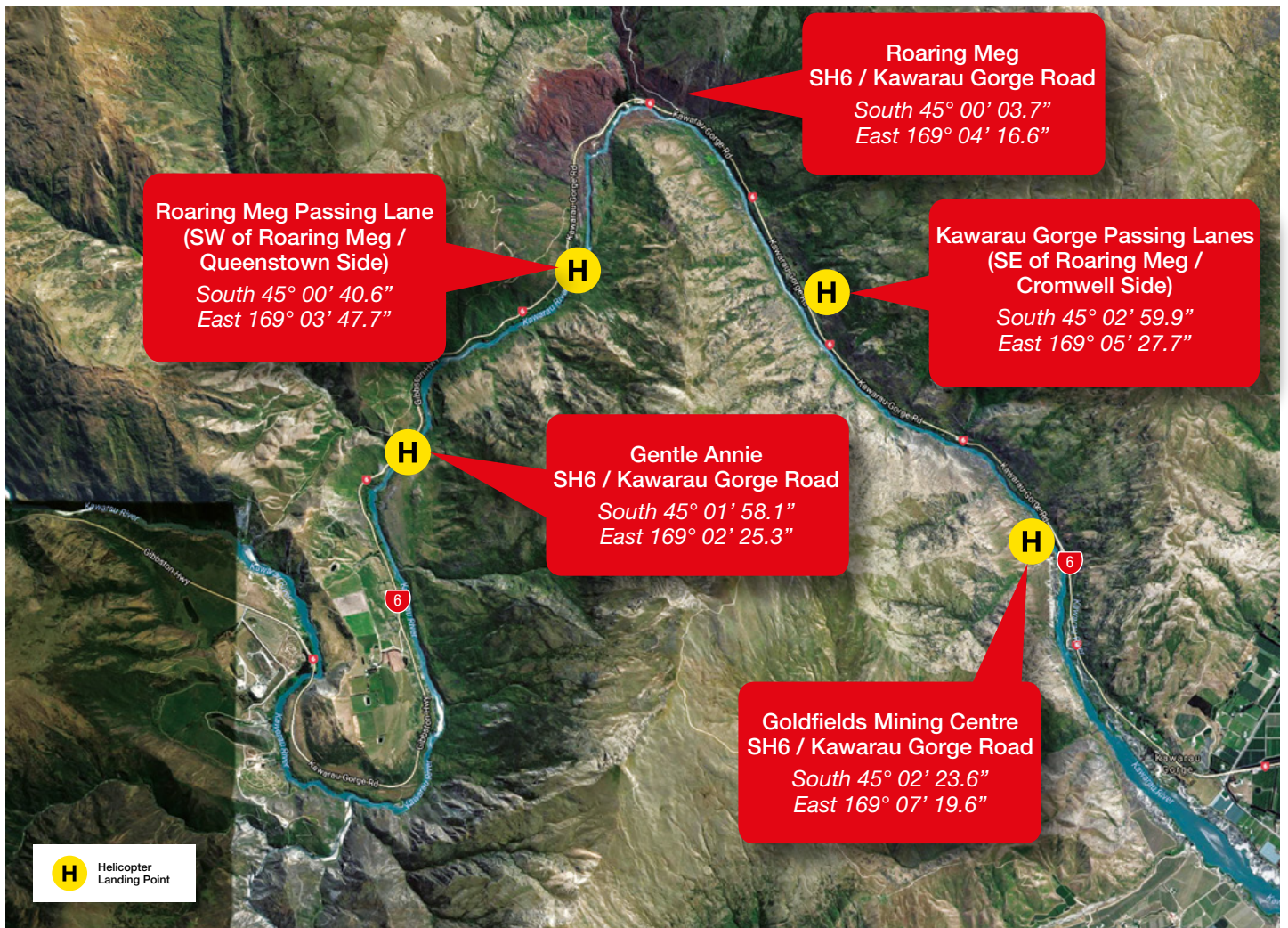


**EXTREME CAUTION for Helicopter Operations –  
High Voltage Transmission Towers run South East / North West in the Valley**



## KAWARAU GORGE

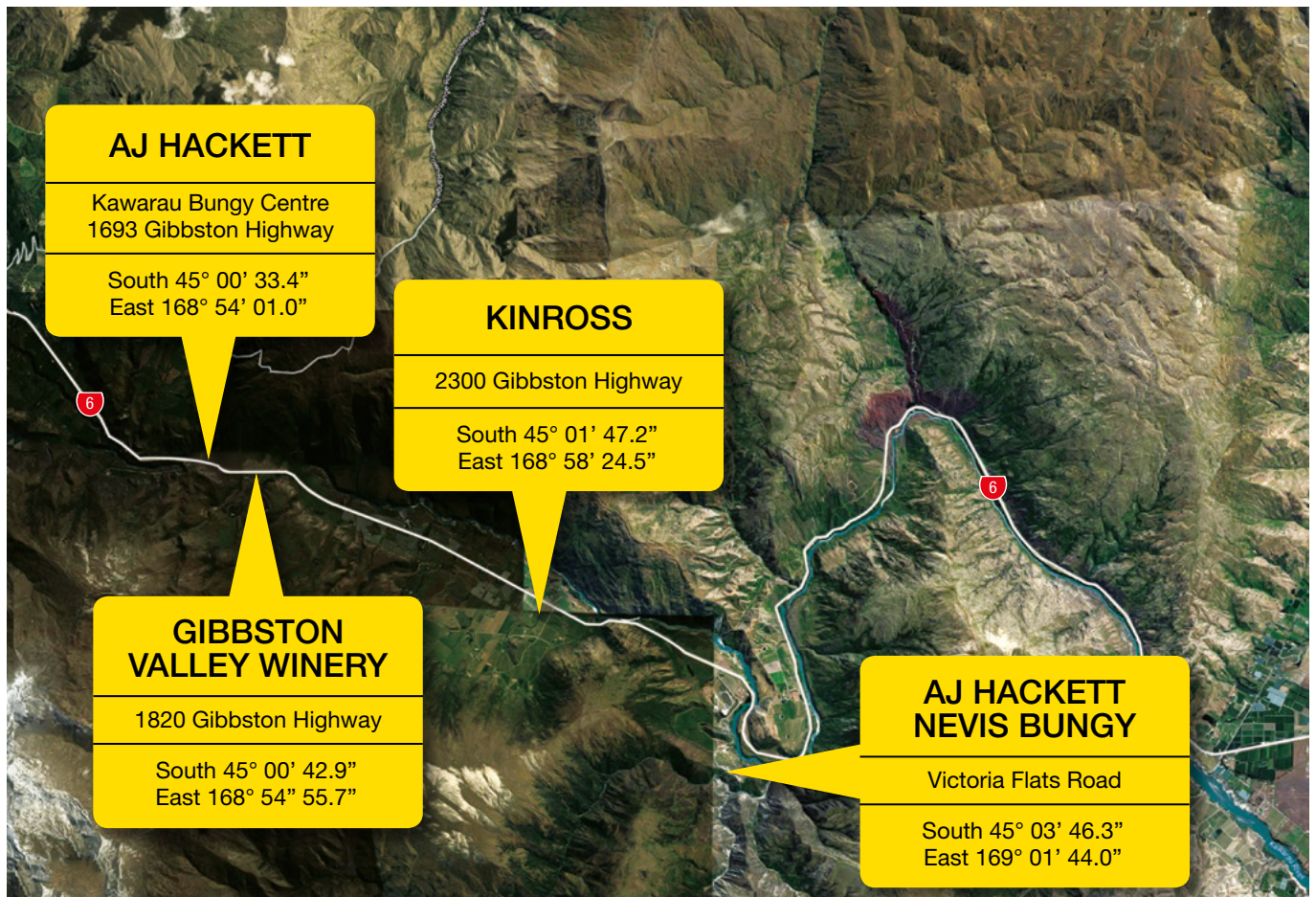
# Tactical Sites Map





GIBBSTON

## Civil Defence Centres Map



# get thru...



GIBBSTON

## Visitor, Tourist and Foreign Nationals Welfare





## Contact Information

**Only call 111 in an emergency. Do not call 111 for information and advice. Calling 111 unnecessarily may put others who are in a genuine emergency situation at risk.**



**Emergency Management Otago**

Te Rākau Whakamarumarū Ōtākou

otagocdem.govt.nz  
**0800 474 082**



New Zealand  
**POLICE**  
Nga Pirihimana O Aotearoa

**Dial 111** (Emergencies Only)  
Queenstown Police Station  
**03 441 1600**  
www.police.govt.nz



**Dial 111** (Emergencies Only)  
Arrowtown Fire Station  
**03 442 1740**  
www.fireandemergency.nz



**St John**

**Dial 111** (Emergencies Only)  
Frankton Ambulance Station  
**03 441 4555** www.stjohn.org.nz



**Dial 111** (Emergencies Only)  
www.coastguard.co.nz



NEW ZEALAND  
**REDCROSS**

**0800 REDCROSS**  
www.redcross.org.nz



QUEENSTOWN  
LAKES DISTRICT  
COUNCIL

**03 441 0499**  
www.qldc.govt.nz



Otago  
Regional  
Council

**03 442 5681**  
www.orc.govt.nz



Ministry of Civil Defence  
& Emergency Management  
Te Rākau Whakamarumarū

www.civildefence.govt.nz



Department of Conservation  
Te Papa Atawhai

**0800 362 468**  
www.doc.govt.nz



www.aaroadwatch.co.nz



**0800 220 005**  
www.auroraenergy.co.nz



**0800 808 587**



**MetService**

www.metservice.com

# get thru...



## Notes

---

---

---

---

---

---

---

---

---

---

---

---

---

---

---

---

---

---

---

---

---

---

---

# get thru...



## Notes

---

---

---

---

---

---

---

---

---

---

---

---

---

---

---

---

---

---

---

---

---

---

---

---

---

---

---

---

---

# For further information:

## LOCAL COUNCIL

Queenstown Lakes District Council  
**03 441 0499**  
[www.qldc.govt.nz](http://www.qldc.govt.nz)

Otago Regional Council  
**03 474 0827**  
[www.orc.govt.nz](http://www.orc.govt.nz)

## CIVIL DEFENCE SITES

Otago Civil Defence  
[www.otagocdem.govt.nz](http://www.otagocdem.govt.nz)

Ministry of Civil Defence  
[www.civildefence.govt.nz](http://www.civildefence.govt.nz)

Be prepared  
[www.whatstheplanstan.govt.nz](http://www.whatstheplanstan.govt.nz)  
[www.getthru.govt.nz](http://www.getthru.govt.nz)

## EMERGENCY SERVICES

New Zealand Police  
[www.police.govt.nz](http://www.police.govt.nz)

Fire & Emergency NZ  
[www.fireandemergency.nz](http://www.fireandemergency.nz)

St John Ambulance  
[www.stjohn.org.nz](http://www.stjohn.org.nz)

